

Community Response System Strengthening Enhancing MNCH outcomes among tribal communities in Madhya Pradesh

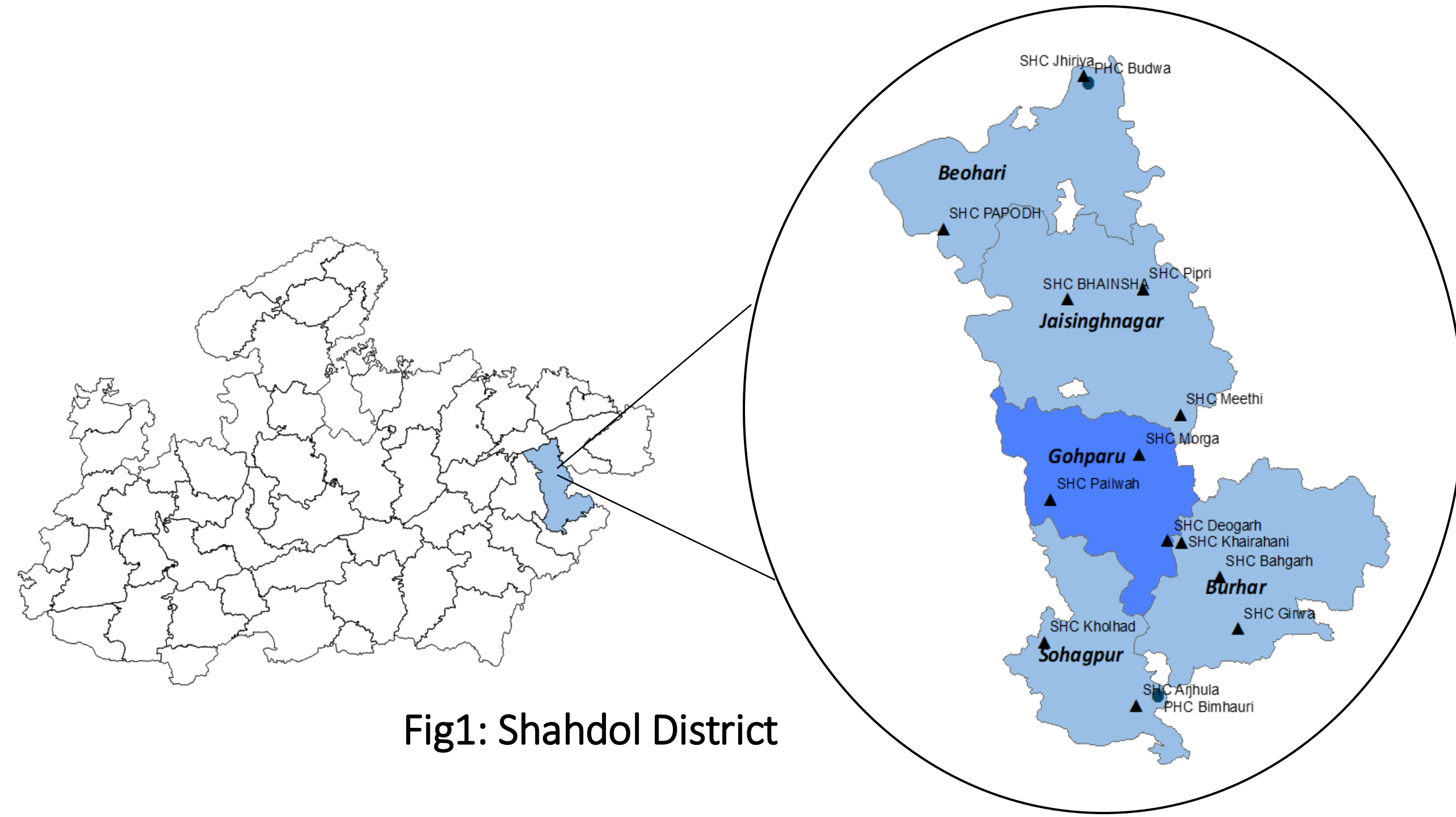


Organization : India Health Action Trust

Authors: Parinita Bhattacharjee, Senthil Kumaran, Dr. Reynold Washington, Thirumalai Narayanan, Dr. Kovid Sharma

Background

Shahdol district, with a population of 1.28 million, has 45% tribal communities, including PVTGs such as Baiga (21%), Kol (23%), Gond (16%) and others (40%). MNCH outcomes remain poor, with a high burden of mortality (NMR:43) and suboptimal health systems.



Major Barriers affecting healthcare-seeking behavior

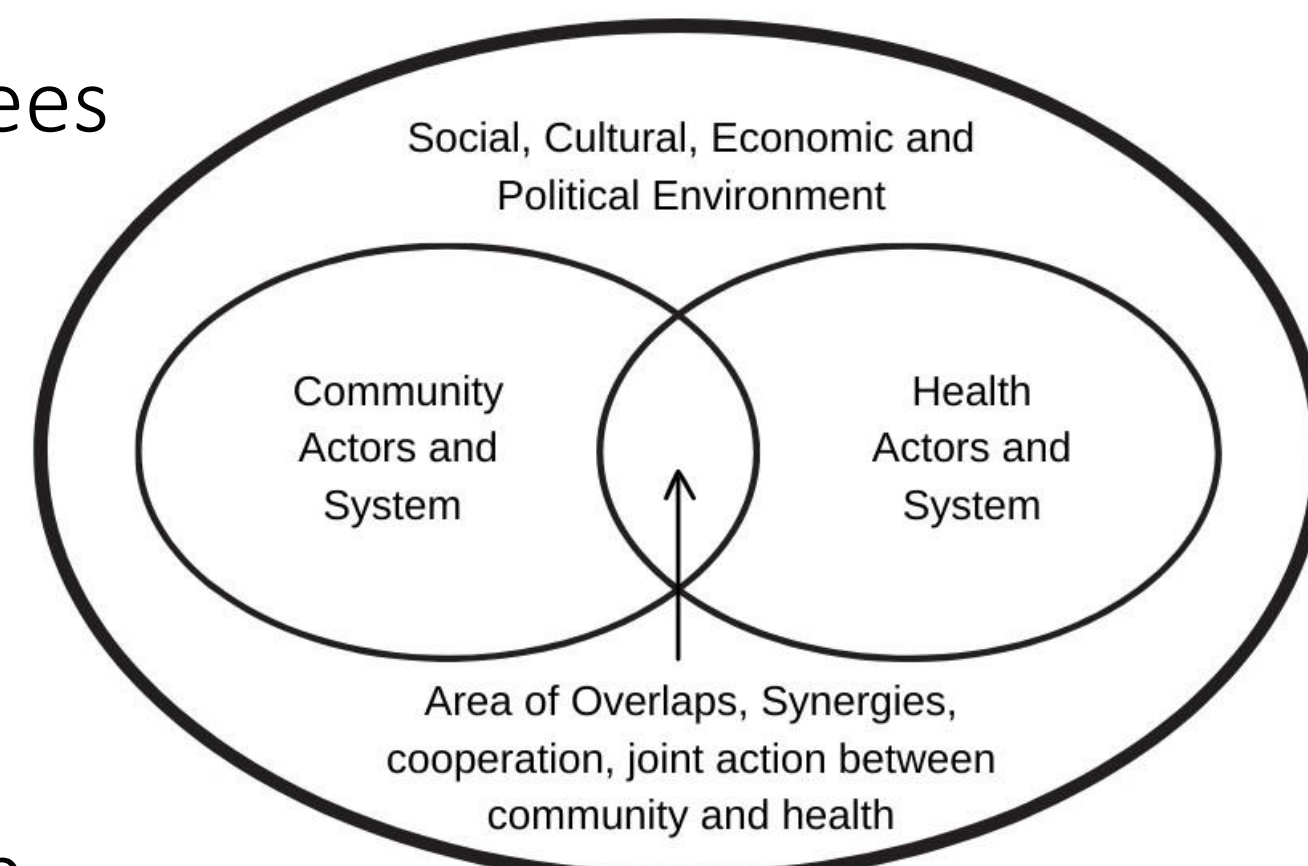


Intervention

Community Response System Strengthening (CRSS) initiative was envisaged to strengthen the capacity of communities, FLWs, and stakeholders for active participation in planning, implementation and uptake of MNCH services, thus addressing inequities among tribal populations. A Pilot initiative was implemented across 61 villages from June 2024 in collaboration with local government.

CRSS focuses on:

- Empower village health committees
- Enable data-driven decision-making
- Enhance community participation
- Encourage community ownership and accountability



Framework

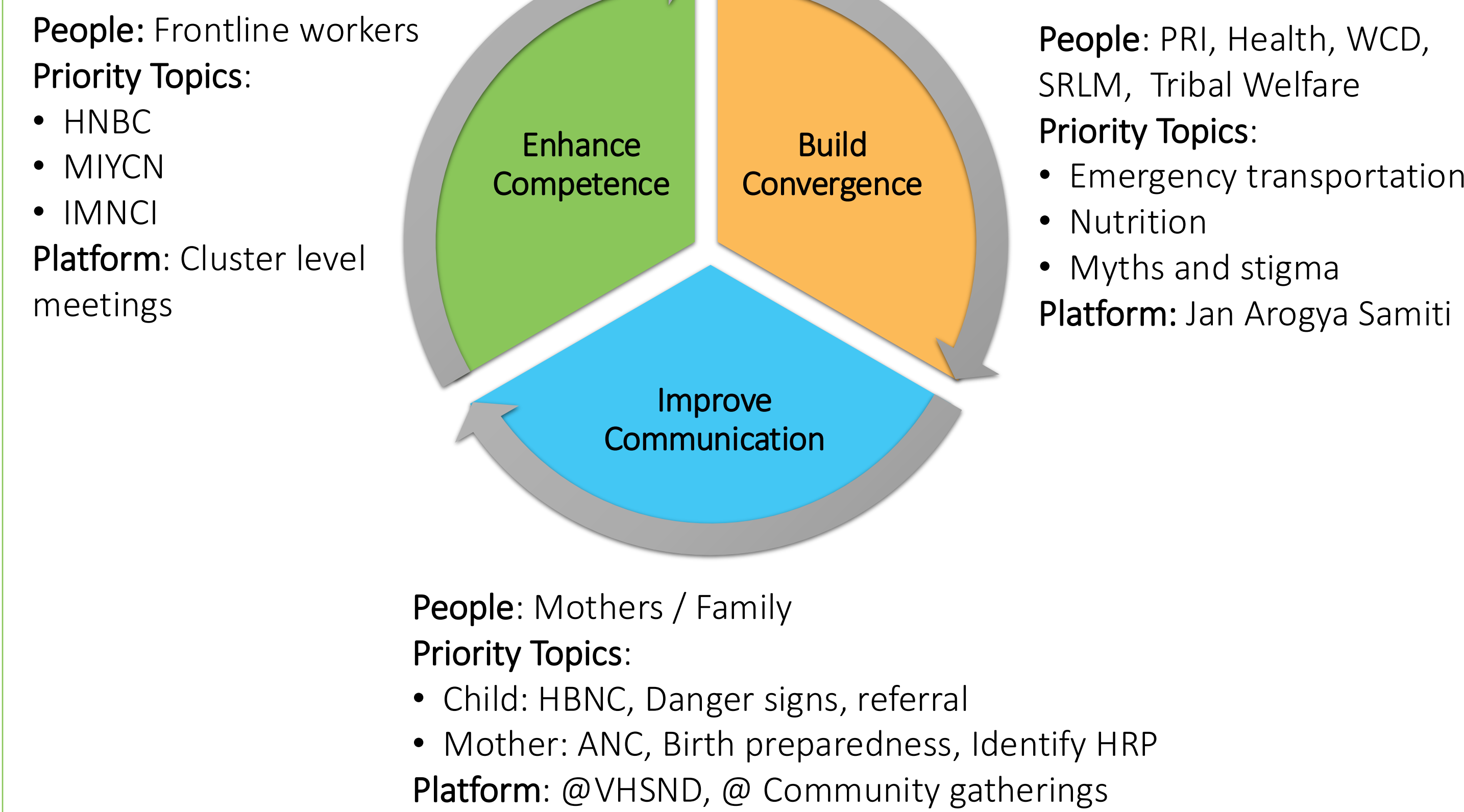
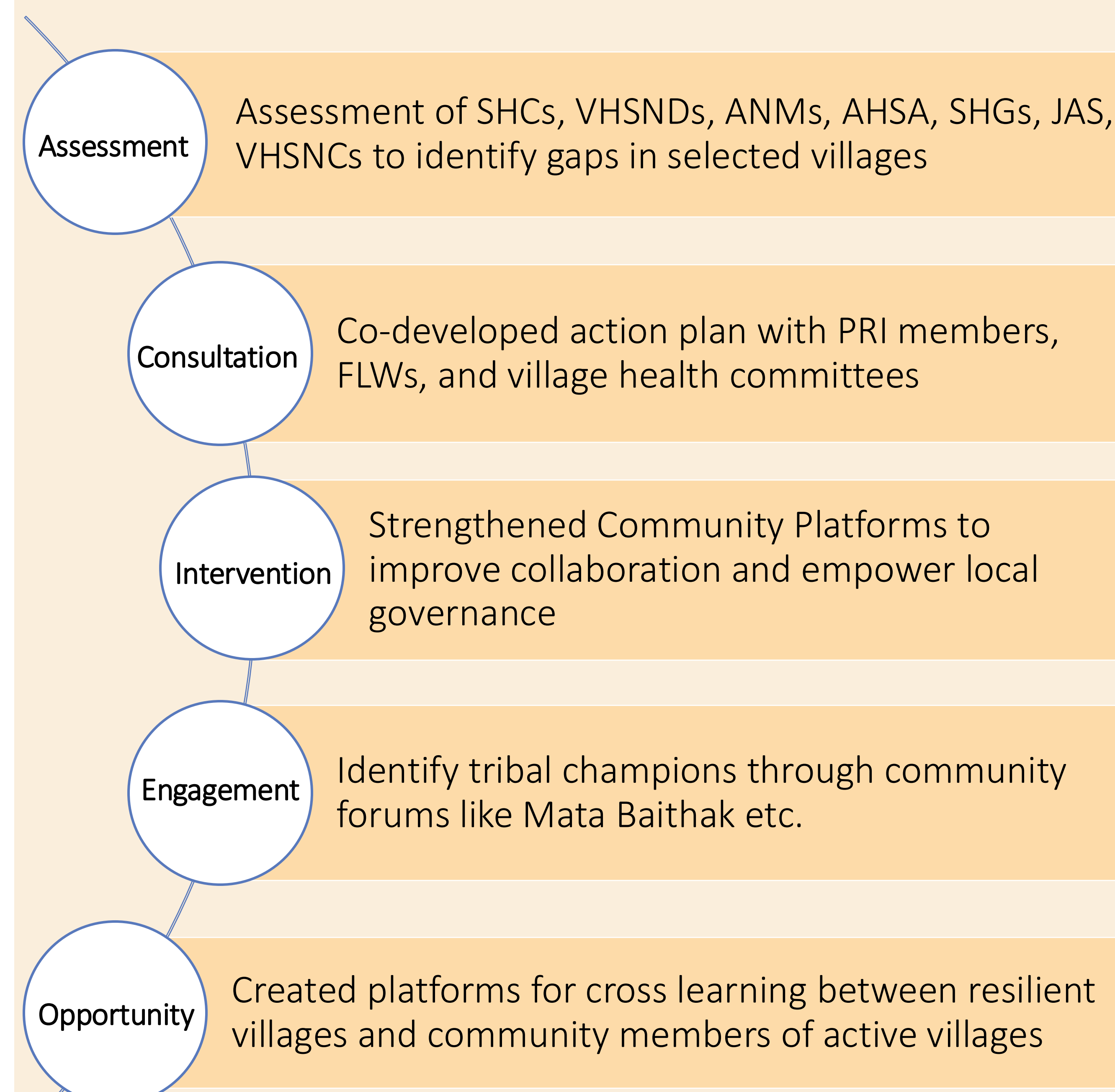


Fig 3: The CRSS Framework

Activities



Achievements

Strengthened Governance

- Capacity enhancement of 170 FLWs and 750 Community Committee members on MNCH
- Strengthened Intersectoral convergence through 234 members in 13 JAS committees

Unlocked Funds

- Activated bank accounts in 80% of JAS committees with 100% utilization of funds
- Emergency transportation support arranged to 46 cases in hard-to-reach areas using JAS funds

Decision Making

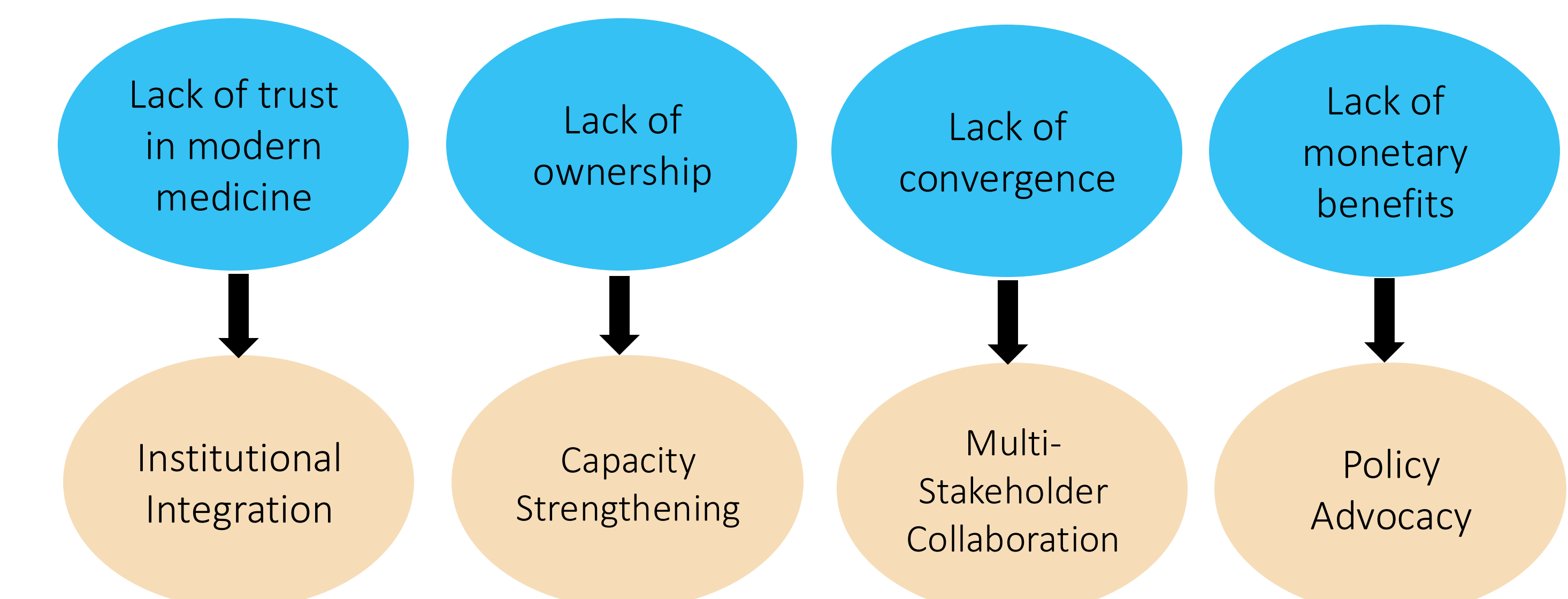
- A visual micro planning tool developed for use by ASHAs
- Enabled ASHA to prioritize the identification and tracking of HRPs in hard-to-reach areas

Sl. No	Key indicators	No. of villages showing improvement
1	Ante Natal Care registration	19 (31%)
2	Early Ante Natal Care	16 (26%)
3	4+ Ante Natal Care	10 (16%)
4	Home Based New Born Care visit	14 (23%)
5	Institutional delivery	15 (24%)

*Improvement: Any change of 10% or more between FY 2023-24 and FY 2024-25. N=61

Challenges and Way forward

The CRSS model has proven its ability to enhance maternal and neonatal health and beyond by fostering community ownership and leveraging local solutions



By institutionalizing these efforts, CRSS can drive long-term scalability and sustainability towards comprehensive primary health care.

