

Health Challenges : A 10-Year Nandurbar Experience

Organization: Chinchpada Christian Hospital,
A Unit of Emmanuel Hospital Association
Authors: Dr. Deepak S. Singh & Dr. Ashita Singh



Our Vision: "Fellowship for Transformation through Caring"

Nandurbar, a culturally rich tribal district in Maharashtra, has 69% tribal population, low literacy (64.4%), and nearly 72% living below the poverty line. Despite its challenges in health, education, and nutrition, it remains a focus of development under NITI Aayog's Aspirational Districts Programme.



World Sickle Cell Day Celebrations

Key Health Challenges

Poverty, illiteracy, overall disempowerment, belief in ancient practices like **branding**, difficult healthcare access

Burdensome diseases like Tuberculosis, Leprosy and Sickle Cell Disease remain major concerns in Nandurbar.

Preventable diseases like Tetanus persists due to low immunization and awareness.



Chinchpada Christian Hospital

- 50-bed facility
- 91 OP patients daily, IP Occupancy 60-80%
- 24-hour emergency
- ICU, isolation wards, emergency services, Operating Theatre
- USG, CT scan, fully equipped laboratory

Providing low cost, high quality care

The Team

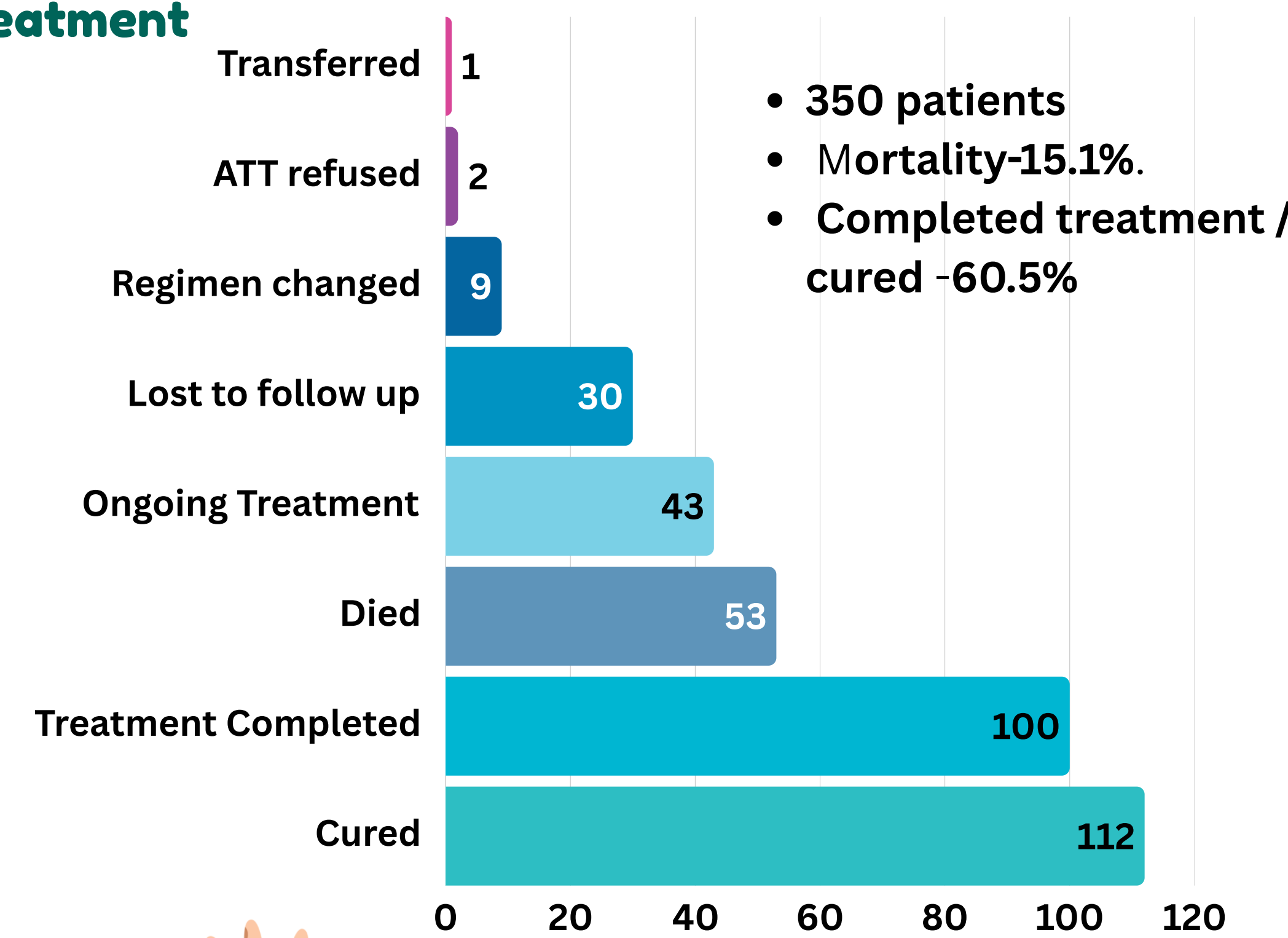
- 95 staff members
- 8 doctors in the medical team & 1 dentist
- community health team -5 members in Chinchpada and a peripheral team of 4 members in Akkalkua block,

Community Interventions

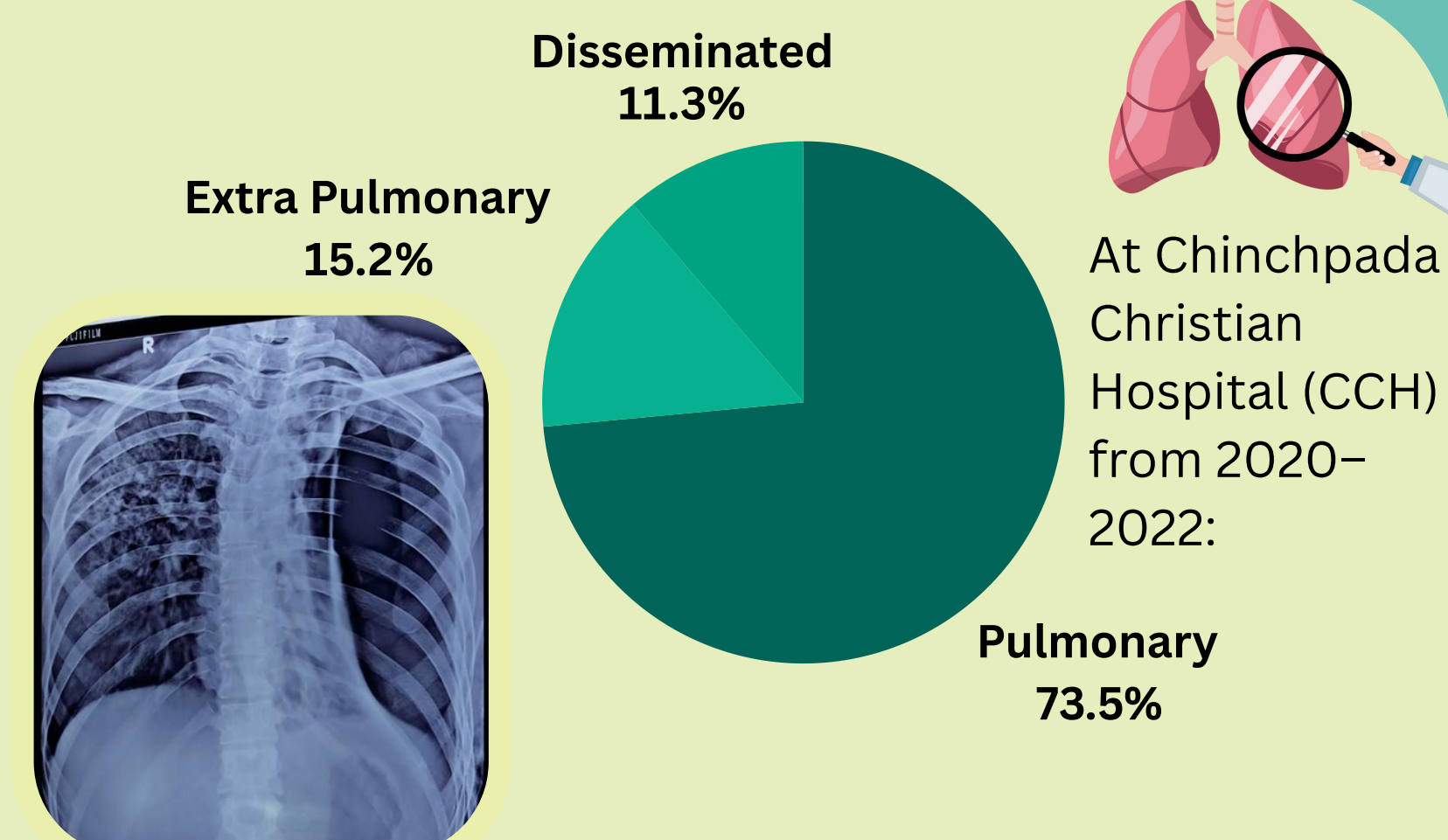
Increased Awareness, Screening, Immunization, Treatment

Decreased Stigma, Disease Burden, Mortality, Morbidity

Tuberculosis Outcomes



Tuberculosis



India accounts for 28% of the world's TB cases¹. Tribal populations bear 4 times the national TB burden, driven by factors² such as lack of awareness, alcohol addiction, long distances to health centers, and poor transport. Alcohol use in 26% (vs national average of 7.2%)

From Jan 2023 to Dec 2024, 506 new TB cases recorded — indicating a sharp rise.

Leprosy



Extensive Undiagnosed Lepromatous Leprosy

Disfigured Hands of a 15-year old Child from Leprosy

Leprosy remains a high-burden disease, with 88 patients currently on treatment. It significantly impacts quality of life.

Tetanus

Over the past 10 years, 11 Tetanus patients were treated, with one death. Most (10 of 11) required ventilatory support, with an average hospital stay of five weeks. Cases included 4 children aged 10-15, highlighting suboptimal childhood vaccine coverage.



Patient with Tetanus on the Ventilator

"Why should a 13-year-old die of tetanus in 2025?"

Branding Practices



Branding in a patient with DU Perforation

Branding in a Child with TB & Type 1 DM

Branding: Of 96 consecutive patients interviewed and examined over 5 days, 15 had a history of branding along with evidence in the form of scars. (Unpublished data)

Citations 1. <https://www.who.int/publications-detail-redirect/9789240037021> 2. (Thomas BE, Adinarayanan S, Manogaran C, Swaminathan S. Pulmonary tuberculosis among tribals in India: A systematic review & meta-analysis. Indian J Med Res. 2015 May;141(5):614-23.) 3. (Hussain T, Tripathy SS, Das S, Das D, Thomas B. Prevalence, risk factors and health seeking behaviour of pulmonary tuberculosis in four tribal dominated districts of Odisha: comparison with studies in other regions of India [Internet]. bioRxiv; 2019 [cited 2023 Aug]. p.2019.12.13.875252. Available from: <https://www.biorxiv.org/content/10.1101/2019.12.13.875252v1>)

