

# Empowering Health: Community Health Initiatives for Pahadi Korwa and other Tribal Communities

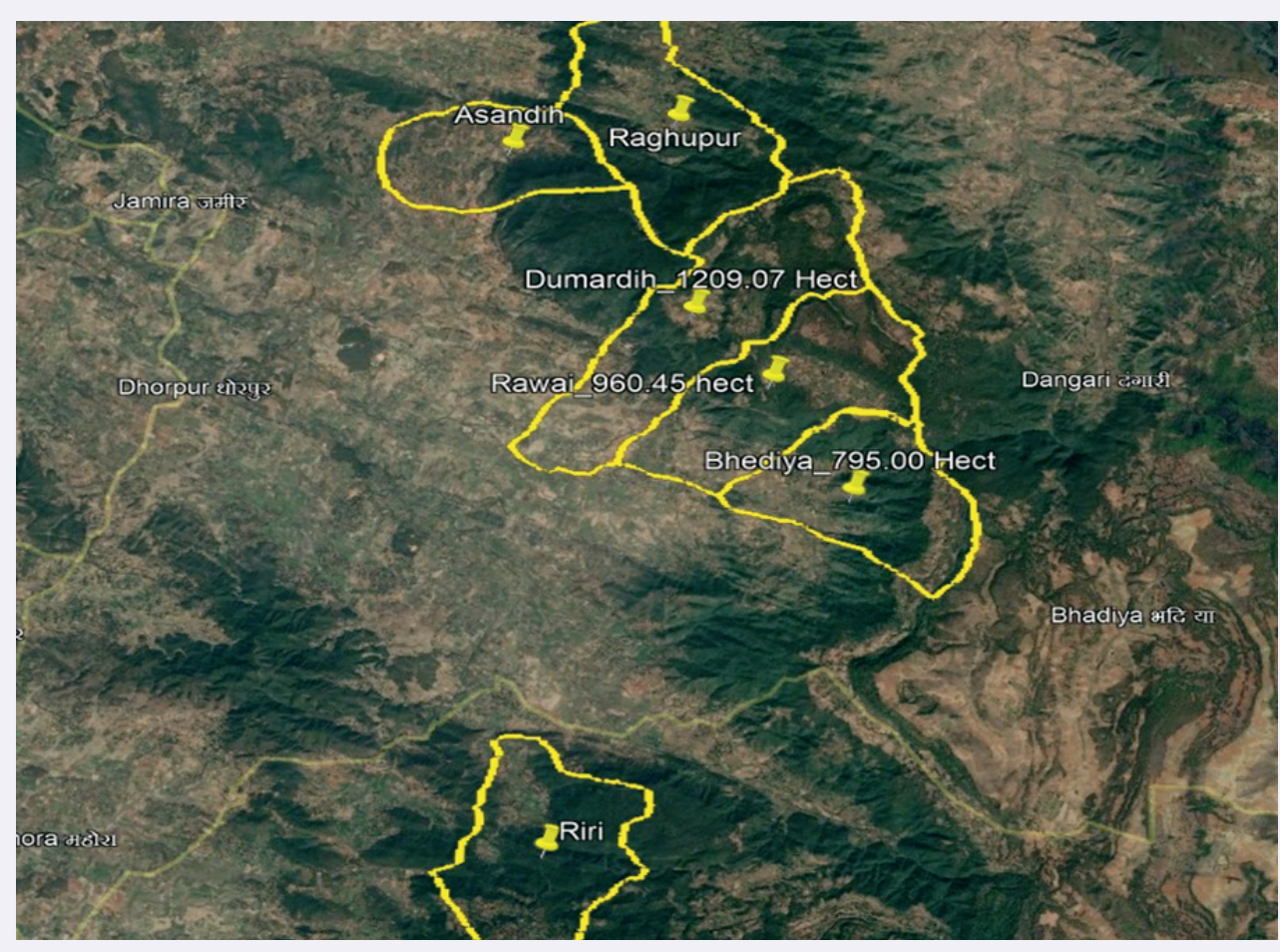
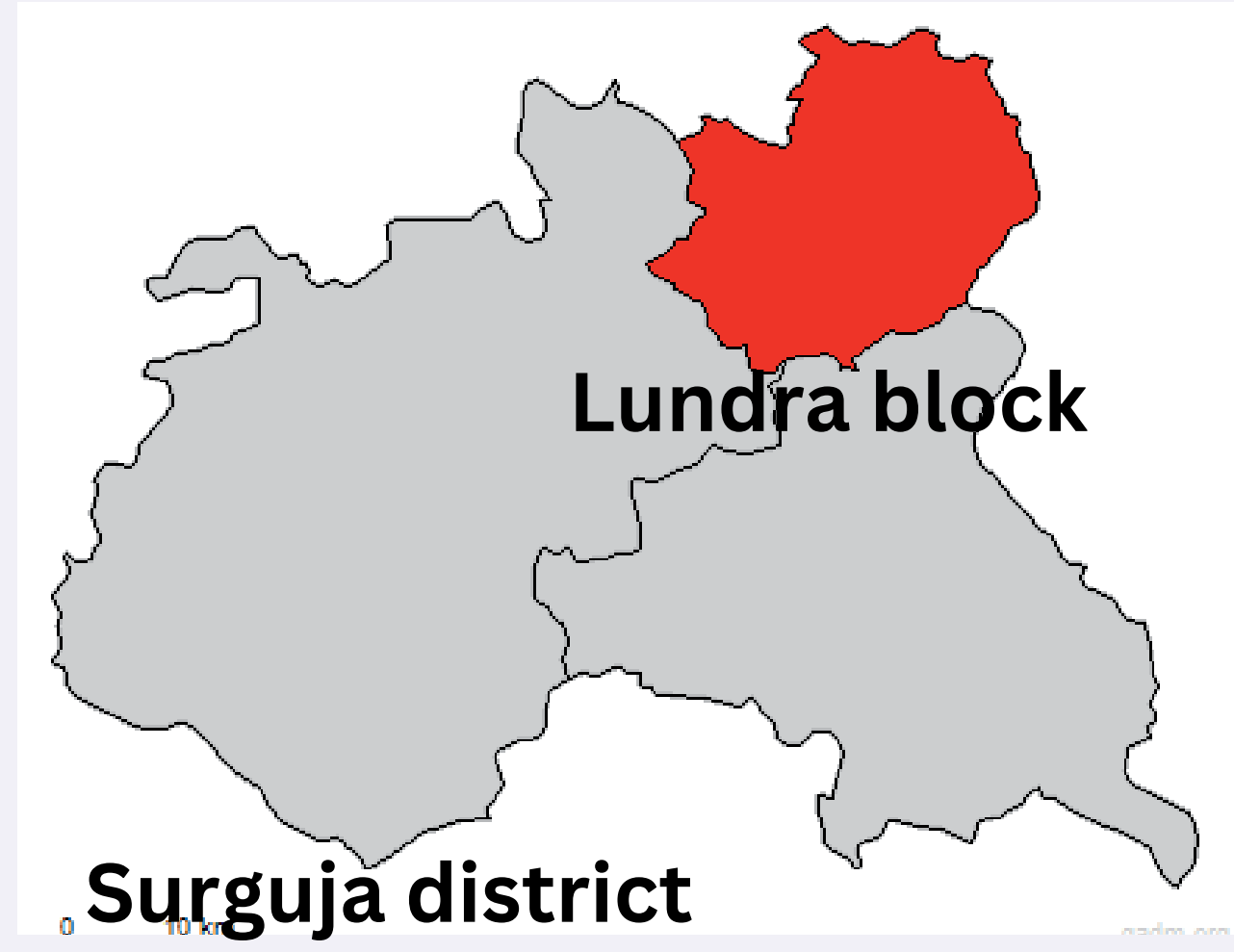


Organization: Chaupal Gramin Vikas Prashikshan Ewam Shodh Sansthan  
 Authors: Ganga Ram Paikra and Ghanshyam Bagel

## INTRODUCTION

Lundra block in Surguja district is predominantly inhabited by tribal communities, especially the **Pahadi Korwa tribe**. It is located far from the district headquarters, accessibility to basic primary health care remains a significant challenge.

- 6 Gram Panchayats: Asandih, Bhediya, Rawai, Ragupur, Dumardih, and Riri, covering a population of **7,200 across 33 paras**.
- Geographical inaccessibility of remote villages.
- The Pahadi Korwa and Adivasi communities - lack health facilities, roads, electricity, and essential services.
- Lack of essential documents (Aadhar cards, Ayushman cards, ration cards, etc.)



## OBJECTIVES

- Bring awareness and facilitate access to essential documents and entitlements
- Facilitate access to government and private hospitals (Sangawari).
- Ensure access to health services and promote institutional deliveries - by organizing awareness and health check-up camps and referrals



## INTERVENTIONS

- Community engagement through Community Health worker (21) and Coordinator (2) with local service provider ( Mitanin and Aganwadi workers)
- Health awareness programs to promote safe medical practices by organizing Community Meeting and House visiting every week)
- Collaboration with government agencies to fast-track document approvals. ( for Ayushman Card, Adhar, Birth certificate, Bank account etc.)
- Organizing Camps, Medical camp and other Government Scheme.

## RESULTS

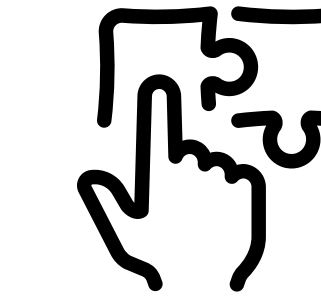
1,756 people received medical treatment and recovered

544 individuals were referred to government and low-cost hospitals.

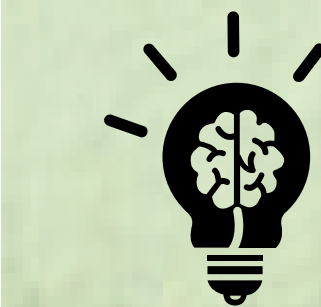
2,476 people obtained entitlements - Ayushman cards, Aadhar cards, ration cards, and pensions.

Child mortality rates decreased, improving child health outcomes.

## LEARNINGS



The Community Health Program has significantly improved healthcare access and essential service availability for the Pahadi Korwa & tribal communities.



Increased institutional deliveries and reduced child mortality highlight the program's impact.



Ensuring sustained healthcare services, awareness, and infrastructure development is essential for long-term progress.



Future focus: Scaling up health initiatives, improving healthcare infrastructure, and integrating more government support.

## SUCCESS STORY

In Asandeeh village, 10 km from Dhorpur Primary Health Centre, three pregnant women were left waiting for hours after a promised ambulance failed to arrive. They were about to return home, Community Health Worker Sunita, on a home visit, learned of their situation and promptly called 102. Within 30 mins, an ambulance arrived, taking the women to the health centre. Two were found to be anaemic and one had a fever all received timely treatment and were safely brought back home.

