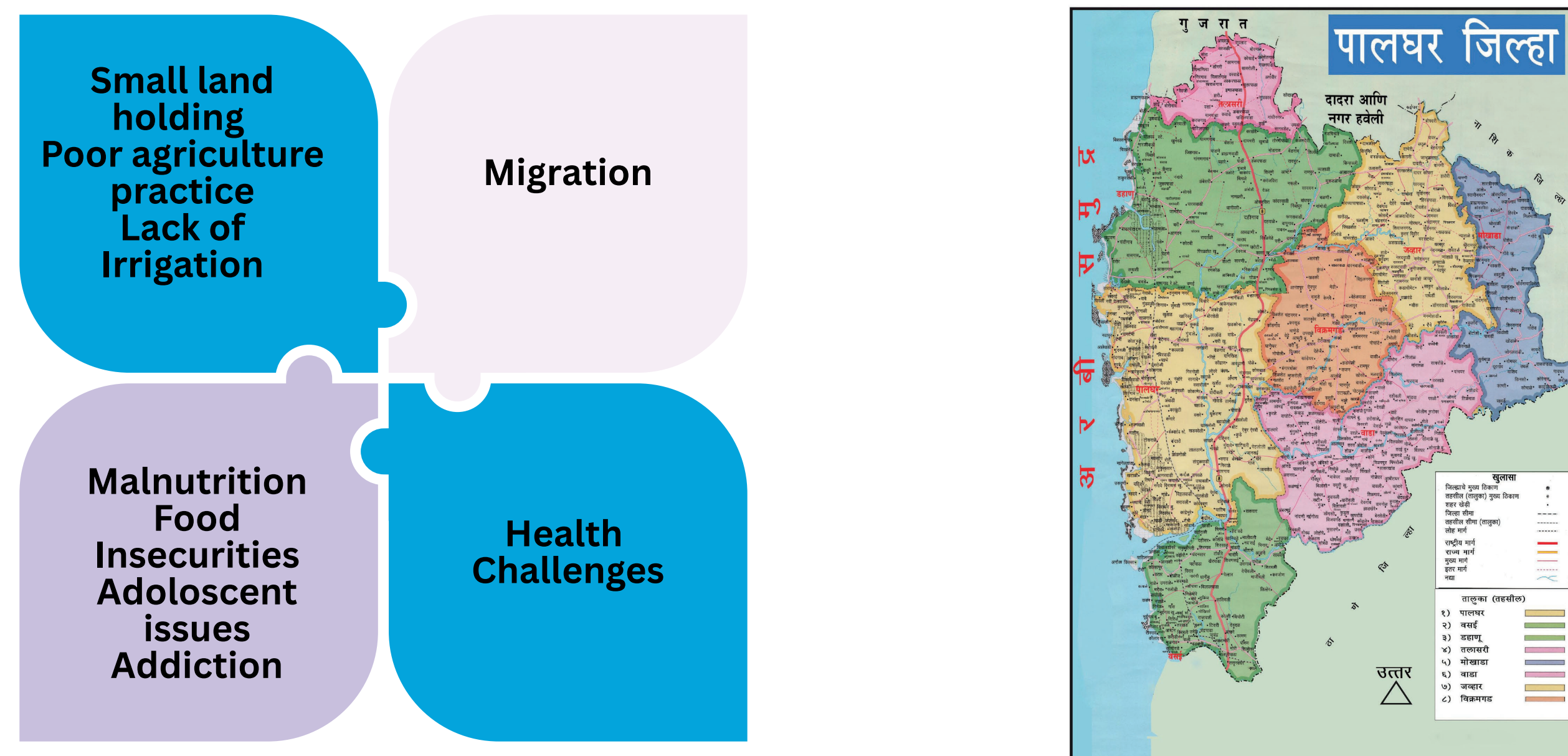


Strengthening Tribal Health through Intersectoral Action in Palghar District

Authors: Sanat Kumar Das; Dr Nikhil Thorat; Jay Joshi³
Organization: Bhaktivedanta Hospital and Research Institute

Background

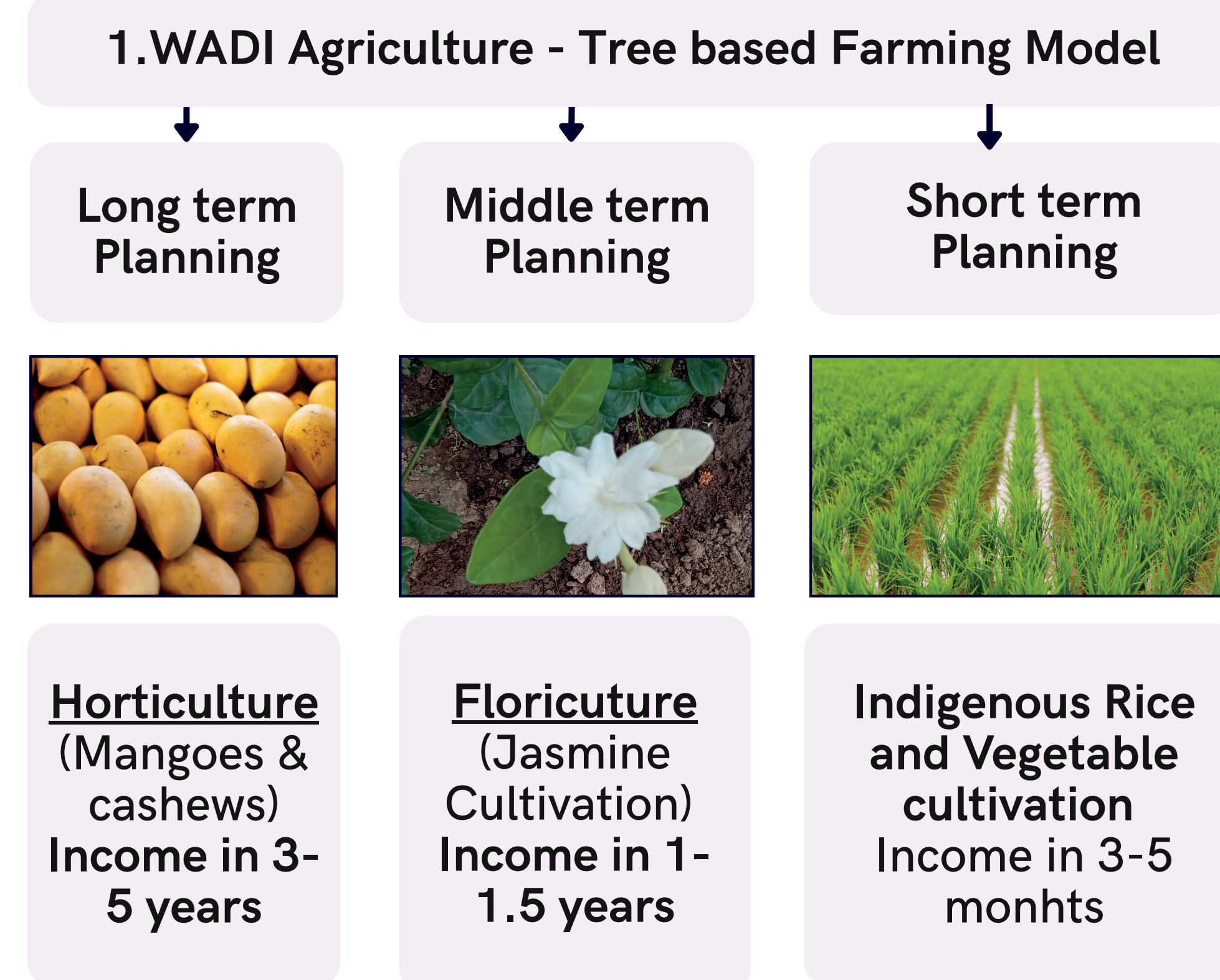
Palghar, a tribal-majority district in Maharashtra, consists of **8 blocks** with a **population of 29.95 lakh**, of which **86.83% are tribal**. The region faces challenges in healthcare, nutrition, and livelihoods due to socio-economic and infrastructural gaps. To address these, an integrated approach was adopted through **peripheral centers, regular outreach camps and various food securities measures**.



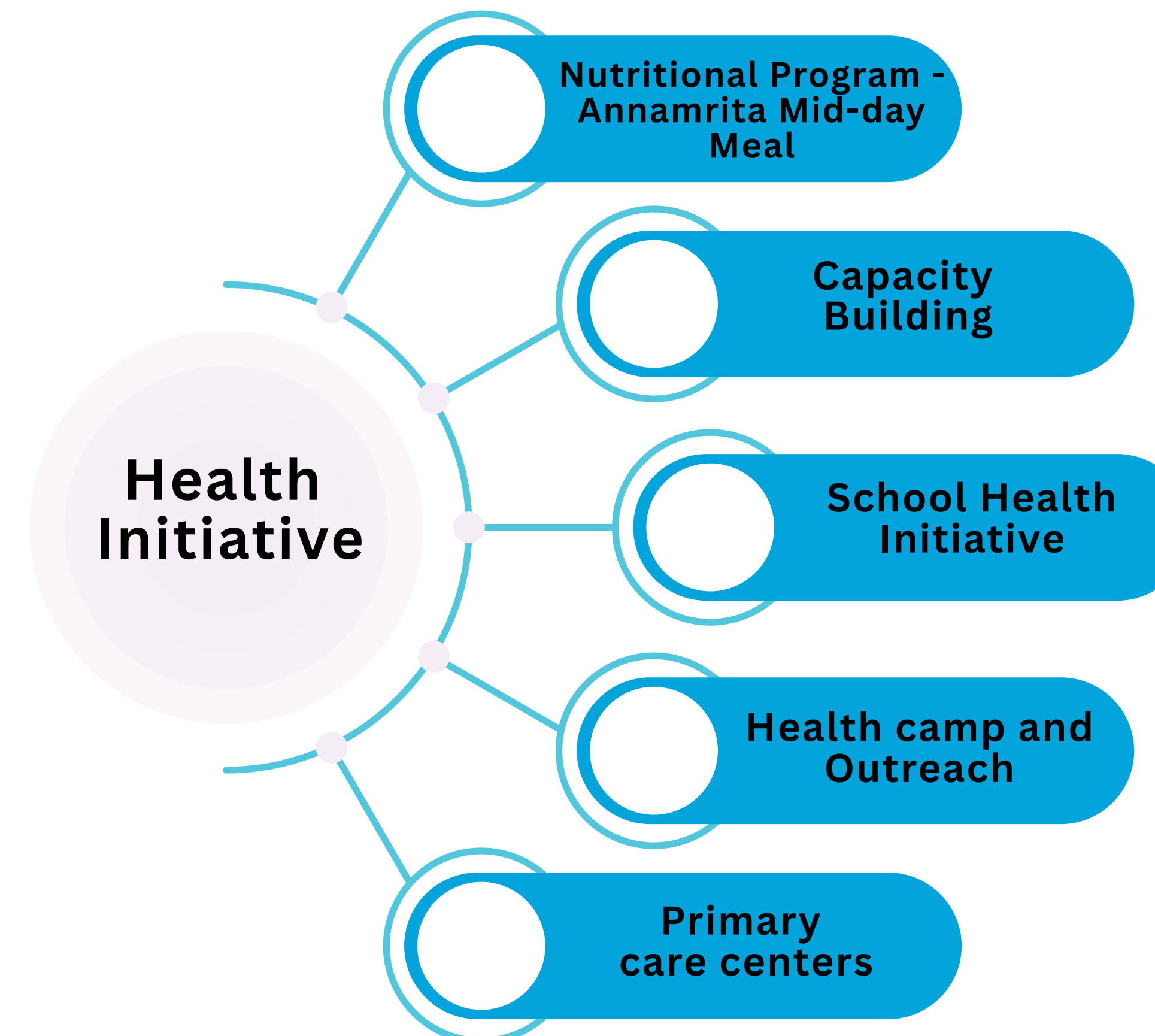
Objective
Improving Health Outcomes through Education, Livelihoods & Nutrition.

Methodology

- **Study Design:** Community-based intervention model.
- **Target Population:** Tribal communities in Palghar & Wada.
- **Approach:** Multi-sector collaboration involving **health, education, nutrition, and local governance**.
- **Key Activities:**
 - Health screenings through outreach camps and peripheral centers.
 - Educational and awareness programs
 - Nutritional interventions, food security measures, and capacity building.
- **Human Resource Engaged** - A total of **50 staff** are deployed across the peripheral centers, including a **10-member team for door-to-door outreach**, a **6-member team for ophthalmic camps**, and another **6-member team for general health camps**.
- **Data Collection:** Surveys, health assessments, stakeholder interviews, and observational analysis.



2. Seed for Life Initiative → Conserve → Cultivate → Consume



Results

1. No of Mid-day Meal Served - 25,000+
2. No of School students screened for Malnutrition - 10,000+
3. The most common health condition prevalent was **anemia** followed by **URTI**, and **scabies** in decreasing order.

Category	Intervention	Key Findings
Livelihood Improvement	Wadi Farms Initiative	Crop production increased from 135.39 tons to 989.05 tons: farmers income rose from Rs. 63,1767 to Rs. 1,20,858.
Nutrition & Food Security	Seed for Life Program	944 beneficiaries, 683 acres cultivated (rice, millets, tubers, sorghum)
Health Initiatives	School Health Screening camps	38 camps, 10,000+ students screened, 162 specialist referrals, 305 glasses distributed
	Community-Based Health Camps	750+ Ophthalmology camps - 1,00,000+ patients surveyed door to door, 12,000 free cataract surgeries 30+ cancer screening camp - 900+ cancer screening,
	De-Addiction	2 Su Arogya camps (300+ patients), 3 addiction awareness camps (1,400+ students educated), 300+ families engaged via house visits.
	Healthcare Workforce Development	700 personnel trained, 50-60 absorbed in peripheral health centers.
	Maternal Health (High-Risk Pregnancy)	100 pregnancies assessed, 20 high-risk cases referred.

Discussion & Conclusion

The **integrated, multi-sectoral intervention** significantly improved **health, livelihoods, and food security** in tribal communities. By combining **healthcare, nutrition, and economic empowerment**, it fostered **resilience and self-reliance**. Strengthening local systems and promoting behavior change led to **sustainable outcomes**. The model underscores the importance of holistic approaches for lasting impact.

